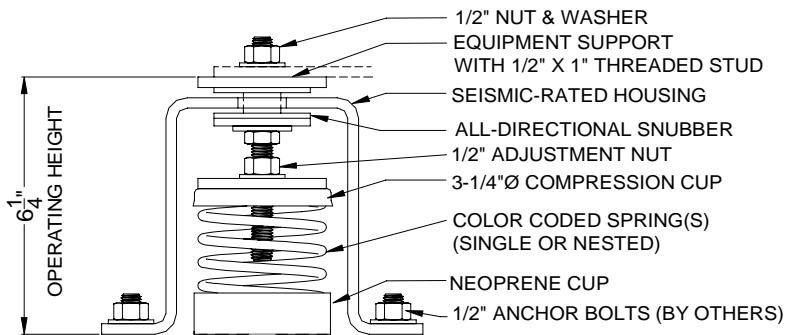


1"(25mm) Deflection Type SFS Floor Mounted Spring Isolator

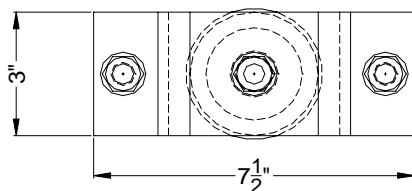
Model	Spring Color(s)	Spring Rates		Rated Load / Deflection				Solid load / Deflection			
		lb/in	kN/M	lb	kN	in	mm	lb	kN	in	mm
SFS-SA-30	Grey	30	5.3	30	0.13	1.0	25	60	0.20	2.0	50
SFS-SA-45	Grey-White	45	7.9	45	0.20	1.0	25	89	0.30	2.0	50
SFS-SA-60	Grey-Yellow	61	10.8	60	0.27	1.0	25	96	0.40	1.6	40
SFS-SA-75	Grey-Orange	75	13.2	75	0.33	1.0	25	142	0.50	1.9	48
SFS-SA-100	Orange	98	17.2	100	0.44	1.0	26	168	0.67	1.7	43
SFS-SA-115	Orange-White	113	19.8	115	0.51	1.0	26	193	0.77	1.7	43
SFS-SA-130	Orange-Yellow	129	22.6	130	0.58	1.0	26	202	0.87	1.6	40
SFS-SA-145	Orange-Orange	143	25.0	145	0.64	1.0	26	245	0.97	1.7	43
SFS-SA-160	Orange-Red	159	27.9	160	0.71	1.0	25	273	1.07	1.7	43
SFS-SA-200	White	192	33.5	200	0.89	1.0	27	317	1.33	1.7	42
SFS-SA-215	White-White	206	36.1	215	0.96	1.0	26	341	1.43	1.7	42
SFS-SA-230	White-Yellow	223	39.0	230	1.02	1.0	26	349	1.53	1.6	40
SFS-SA-245	White-Orange	236	41.4	245	1.09	1.0	26	391	1.63	1.7	42
SFS-SA-260	White-Red	253	44.3	260	1.16	1.0	26	418	1.73	1.7	42
SFS-SA-300	White-Blue	291	51.0	300	1.33	1.0	26	454	2.00	1.6	40
SFS-SA-350	White-Black	348	60.9	350	1.56	1.0	26	505	2.34	1.5	37

INSTALLATION INSTRUCTIONS

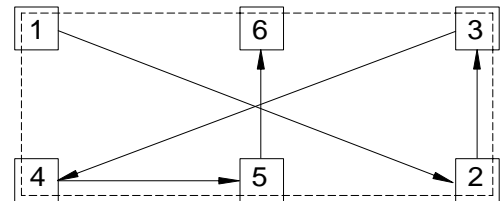
1. Properly locate each isolator from the submittal drawing using isolator model and color coded springs as identification.
2. Assemble isolators as shown without upper hold down nut. Slide under equipment, passing rod through mounting hole.
3. Mark anchor bolt hole locations. If mounting in concrete ensure adequate edge distance is maintained.
4. If using expansion anchors, remove isolator and place anchors, then replace isolator. If using concrete screws, drill into the concrete through the housing mounting holes, then place the screw anchors. Tighten the anchors as required.
5. Secure the equipment to the isolator using the hold-down nut and washer.
6. Equipment must be at operating weight before final adjustment can begin.
7. Turn level adjustment nut clockwise 4 complete turns on each isolator as shown in the sequence below. Repeat this pattern until the equipment just lifts off the isolator about 1/8" such that the snubber is not in contact with the housing.



ELEVATION VIEW



PLAN VIEW



ADJUSTMENT SEQUENCE

Vibro-Acoustics®

Type SFS Seismic Floor Mount

Rev. 03/2008

Drawing No.

SFS-SA