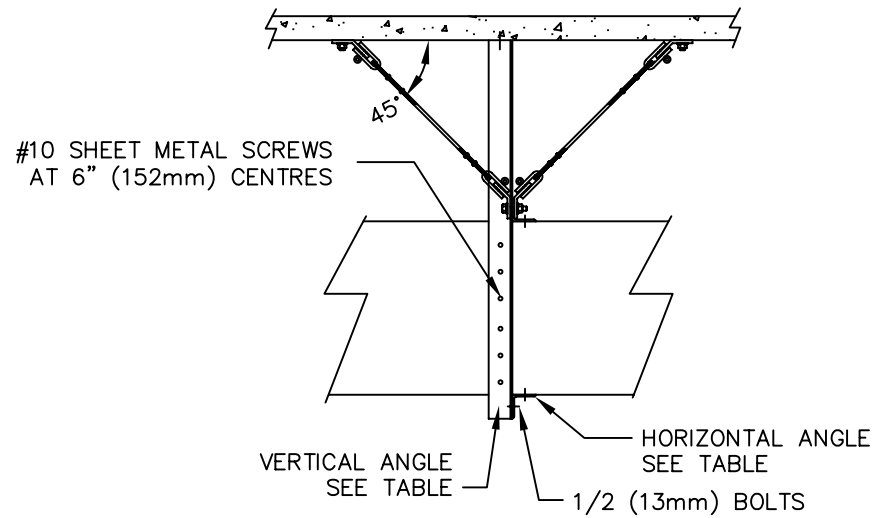


**DETAIL C - CROSS SECTION  
ALTERNATE TRANSVERSE RESTRAINT**



**DETAIL C - SIDE VIEW  
LONGITUDINAL RESTRAINTS  
TWO CABLES EACH SIDE OF DUCT**

DUCT WIDTH in (mm)	HORIZONTAL ANGLE (or equivalent)	VERTICAL ANGLE (or equivalent)	ANCHOR TO CONCRETE in (mm)
30 (762)	2 x 2 (51x51) x16 GA	4 x 4 (102x102) x12 GA	2 @ 1/2 (13)
42 (1067)	2 1/2 x 2 1/2 (64x64) x16 GA	4 x 4 (102x102) x12 GA	2 @ 1/2 (13)
54 (1372)	2 1/2 x 2 1/2 (64x64) x16 GA	4 x 4 (102x102) x12 GA	2 @ 1/2 (13)
60 (1524)	3 x 3 (76x76) x16 GA	3 x 3 x 1/4 (76x76x6)	2 @ 5/8 (16)
84 (2134)	4 x 4 (102x102) x16 GA	3 x 3 x 1/4 (76x76x6)	2 @ 3/4 (19)
96 (2438)	4 x 4 (102x102) x12 GA	4 x 4 x 1/4 (102x102x6)	4 @ 5/8 (16)
108 (2743)	3 x 3 x 1/4 (76x76x6)	4 x 4 x 1/4 (102x102x6)	4 @ 3/4 (19)
120 (3048)	3 x 3 x 1/4 (76x76x6)	5 x 3 x 1/4 (102x102x6)	4 @ 7/8 (22)

PROJECT:

CUSTOMER:

CONSULTANT:

PROJECT NO.:

PROJECT MANAGER:

SEISMIC CABLE  
RESTRAINT- DUCT

DRAWN BY: SB

SCALE: NTS

CHECKED BY: JP

DATE: 18 Aug 03

**Vibro-Acoustics®**

DRAWING NO.: Ducting 4of5

REVISION NO.: 0